

HASE II

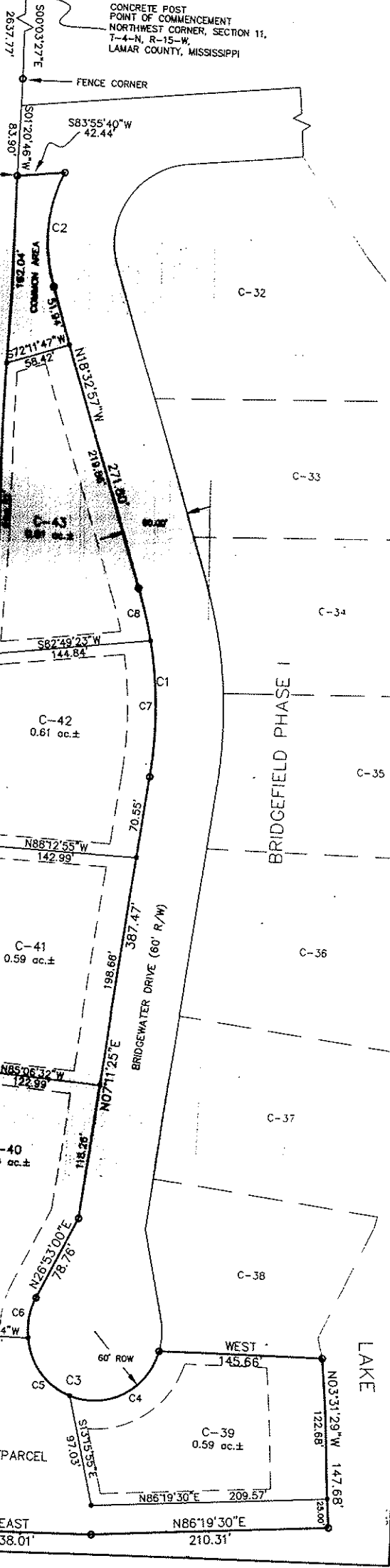
CONCRETE POST
POINT OF COMMENCEMENT
NORTHWEST CORNER, SECTION 11,
T-4-N, R-15-W,
LAMAR COUNTY, MISSISSIPPI

NAME OF ENGINEER:

Clearpoint
Consulting Engineers, P.A.

24 UNIVERSITY PLACE
HATTIESBURG, MISSISSIPPI 39402

P.O.B.



ORIENTATION DERIVED FROM
BRIDGEFIELD PHASE I (REVISED)